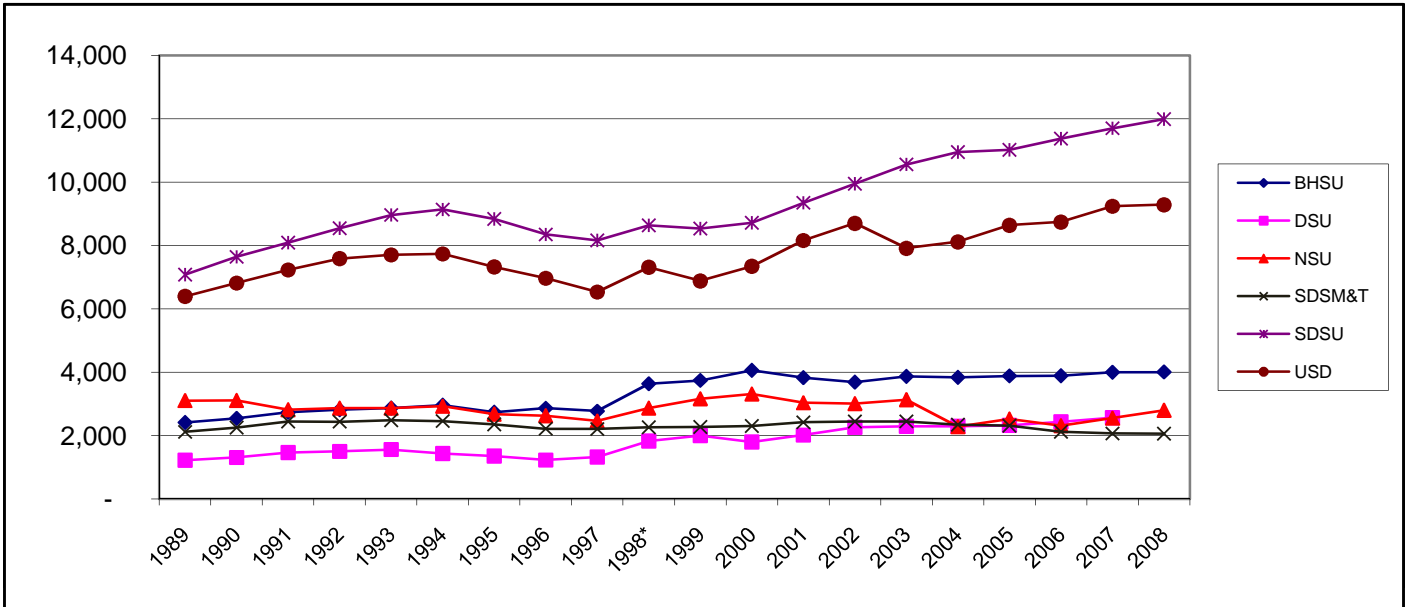


South Dakota Public College Enrollments

SOURCE: Upper Midwest Association of College Registrars and Admissions Officers (UMACRAO) and Dakota ACAC

	1989	1990	1991	1992	1993	1994	1995	1996	1997	1998*	1999	2000	2001	2002	2003	2004	2005	2006	2007	2008
BHSU	2,412	2,545	2,734	2,814	2,870	2,964	2,736	2,866	2,773	3,639	3,747	4,068	3,836	3,694	3,873	3,845	3,888	3,896	4,004	4,011
DSU	1,224	1,311	1,465	1,504	1,563	1,438	1,354	1,231	1,326	1,831	2,003	1,801	2,019	2,263	2,295	2,295	2,329	2,439	2,570	2,780
NSU	3,108	3,113	2,818	2,868	2,867	2,927	2,683	2,634	2,464	2,873	3,164	3,315	3,038	3,013	3,137	2,287	2,528	2,319	2,555	2,805
SDSM&T	2,118	2,253	2,450	2,444	2,490	2,463	2,356	2,218	2,210	2,265	2,274	2,307	2,424	2,447	2,454	2,345	2,313	2,124	2,070	2,061
SDSU	7,080	7,642	8,090	8,550	8,966	9,140	8,840	8,350	8,162	8,635	8,540	8,719	9,350	9,952	10,562	10,954	11,021	11,377	11,706	11,995
USD	6,397	6,817	7,231	7,591	7,707	7,739	7,329	6,970	6,534	7,317	6,887	7,349	8,161	8,703	7,917	8,120	8,641	8,746	9,243	9,291
Total	22,339	23,681	24,788	25,771	26,463	26,671	25,298	24,269	23,469	26,560	26,615	27,559	28,828	30,072	30,238	29,846	30,720	30,901	32,148	32,943

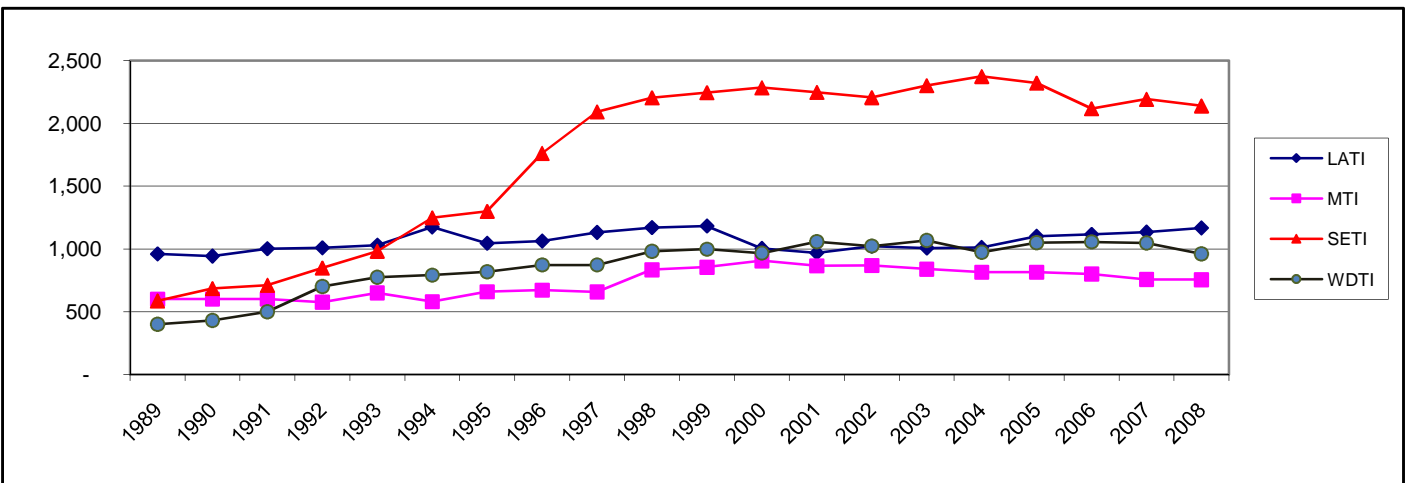
*NOTE: Regents office changed reporting method in 1998 to include students enrolled in both self-support and state-supported courses.



SD Technical Institute Enrollments

SOURCE: Upper Midwest Association of College Registrars and Admissions Officers (UMACRAO) and Dakota ACAC

	1989	1990	1991	1992	1993	1994	1995	1996	1997	1998	1999	2000	2001	2002	2003	2004	2005	2006	2007	2008
LATI	959	942	1,002	1,008	1,030	1,174	1,044	1,062	1,130	1,170	1,182	1,004	967	1,022	1,007	1,012	1,100	1,115	1,133	1,167
MTI	600	600	600	575	650	580	659	672	657	834	854	906	866	868	839	815	815	800	757	755
SETI	585	684	710	847	981	1,247	1,298	1,760	2,091	2,203	2,244	2,283	2,246	2,205	2,300	2,373	2,320	2,116	2,191	2,138
WDTI	400	430	500	700	775	791	818	872	872	981	997	966	1,057	1,022	1,067	972	1,048	1,055	1,046	959
Total	2,544	2,656	2,812	3,130	3,436	3,792	3,819	4,366	4,750	5,188	5,277	5,159	5,136	5,117	5,213	5,172	5,283	5,086	5,127	5,019

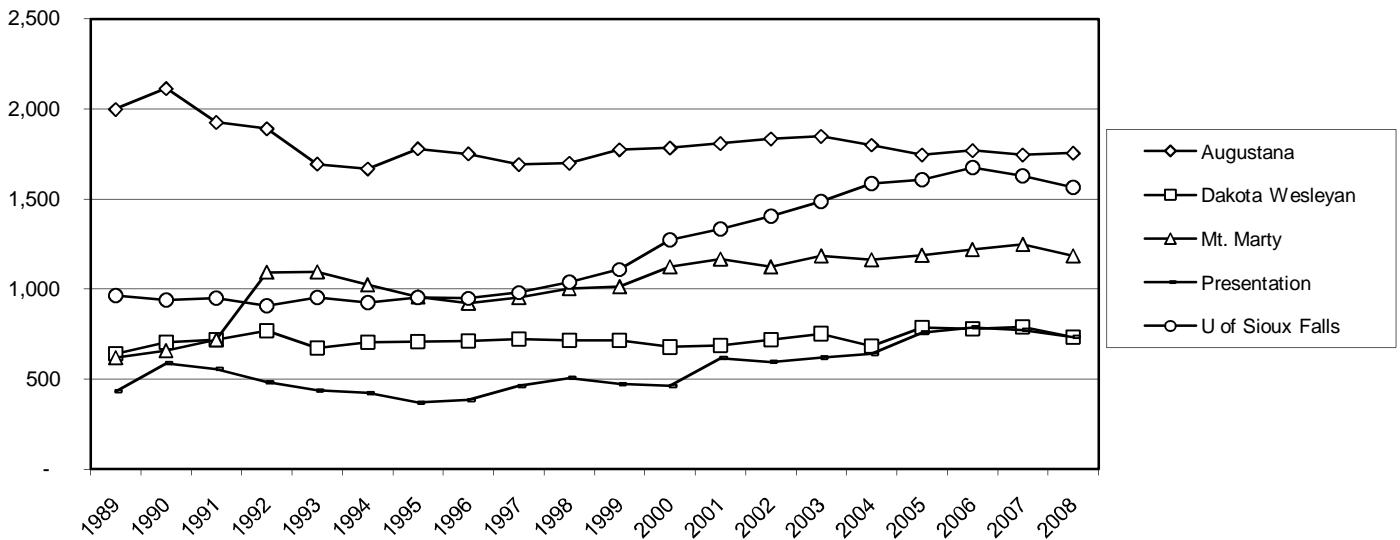


SD Private College Enrollments

SOURCE: Upper Midwest Association of College Registrars and Admissions Officers (UMACRAO); Dakota ACAC

1989	1990	1991	1992	1993	1994	1995	1996	1997	1998	1999	2000	2001	2002	2003	2004	2005	2006	2007	2008	
1,998	2,113	1,925	1,890	1,693	1,667	1,778	1,750	1,691	1,698	1,774	1,783	1,807	1,834	1,848	1,799	1,745	1,768	1,745	1,754	Augustana
			197	280	332	372	308	325	553	707	850	822	923	984	1,237	1,206	1,015	950	947	Colorado Tech.
640	705	718	766	670	704	708	710	721	713	715	677	687	717	751	681	783	777	788	733	Dak. Wesleyan
202	249	194	143	173	167	202	193	218	208	212	212	280	357	444	505	538	477	477	330	Kilian CC
620	660	721	1,094	1,097	1,024	958	923	954	1,004	1,013	1,125	1,168	1,123	1,185	1,163	1,189	1,220	1,249	1,184	Mt. Marty
853	722	503	707	791	828	976	952	1,026	1,075	941	1,215	1,240	1,304	1,444	1,627	1,941	1,969	825	754	National Am. U
431	588	556	482	435	421	369	384	461	506	471	462	615	594	618	639	758	786	773	733	Presentation
157	132	209	256	224	214	214	198	199	201	219	229	275	285	287	274	291	279		227	Siss.-Wahpeton
962	937	949	906	951	925	951	947	979	1,039	1,107	1,272	1,332	1,405	1,485	1,586	1,606	1,674	1,628	1,564	U of Sioux Falls
5,863	6,106	5,775	6,441	6,314	6,282	6,528	6,365	6,574	6,997	7,159	7,825	8,226	8,542	9,046	9,511	10,057	9,965	8,435	8,226	

SD Church Affiliated Colleges



Other SD Non-Public Colleges

